

Technical Information



The Historic **Strand Theater** of Lakewood

400 Clifton Ave, Lakewood, NJ 08701
Office: (732) 367-7789 x206 Fax: (732) 367-7819
<http://www.strandlakewood.com>
Technical Director: Christopher 'Crick' Staton
E-mail: cricket@strandlakewood.com



Last revised by C. E. Staton on October 2003 (R2.1)

Table of Contents

	<u>Page</u>
Introductory Notes	3
General Information	
Contact Information	4
Area Hotels, Taxi Services, Restaurants	5
Bars, Handicapped Access, Emergency Numbers/Doctors, Parking	6
Travel Directions, Time Zone, Currency, Measurements, Language	7
Management	
Production Office, Stage Manager's Console, Rehearsal Rooms, Crew	8
Policies (Animals, Access, House, Recording, Security, Smoking, Alcohol)	9
Load-In	
Dimensions, Map	10
Carpentry	
Seating, Stage Dimensions, Stage Floor, House Draperies	11
Line Set Data, Support Areas	12
Policies (Spray Painting, Fire Curtain, Rigging, Flameproofing)	13
Lighting	
Power, Dimmers, Control, Circuits	14
Front of House, Equipment Inventory	15
Notes	16
Sound	
Power, Wiring, Control, Monitors, Production Communication	17
Equipment Inventory	18
Props	
Orchestra Pit, Music, Shell, Platforms, Dance Floor, Lecterns	19
Wardrobe	
Dressing Rooms, Wardrobe Area, Quick-Change Booths	20
Other Spaces	
Gallery	21
Baseball Stadium	21
Attachments	
Line Set Plot	Attachment A 22
Seating Chart	Attachment B 23
Local Area Map	Attachment C 24
Floor Plan	Attachment D 25
Stage Diagram (Dimensioned)	Attachment E 26
FOH Light Plot	Attachment F 27
Stage Light Plot	Attachment G 28 – 29
Centerline Section	Attachment H 30
Lightwrite Instrument Schedule	Attachment I 31 - 40

This technical packet conforms to USITT standards and is also available online at <http://www.strandlakewood.com>
Any prices quoted are approximate. Listings of hotel, restaurants, or doctors do not constitute endorsements.
Draftings and maps are not to scale; contact theater or check website for scale drafting.

Introductory Notes

We hope that this technical packet will give you all the information you need for your visit to the Strand Theater. In the introductory notes are a few things that you should be especially aware of as you plan your visit.

Loading Dock: Our loading area is not on our property so we MUST know ahead of time when anything larger than a van or small truck needs to be backed up to the loading dock. It also may be difficult for a large semi truck to be backed up to the dock unless you have a very experienced driver.

Rigging and Pit: Please take note that the theater DOES NOT have a grid! All above-stage rigging MUST be either on a batten or rigid from a very few steel beams. Currently only a very few of our crew are able to rig off the steel, so we must be made aware of any rigging needs at least two months in advance. Please see Attachment A for available line sets.

The pit normally has a cover on it (and no piano in it). Cover removal is very time-consuming, so again we must ask for a two-month warning. Access from the stage into the audience is normally from offstage only. If you wish to have direct access from the stage to the audience, the first two rows cannot be sold so that removable steps can be set up.

Lighting: Included in this packet is our repertory plot. Please keep it in mind as you are designing your plot. Ours is a very flexible plot and should work well for most shows. Refocusing and rechanneling are not problems; however, rehangs of the plot is both time-consuming and expensive, and should be avoided at all cost! Rental groups will be charged for any changes to the plot. We will not relamp instruments, other than those that blow out, and will relamp Par cans on a limited basis only! Included is a Lightwrite instrument schedule (Attachment I). Please contact the Technical Director for a copy of the Lightwrite 3 file or the AutoCAD draftings. ½ “ or ¼ “ plots available upon request.

The front-of-house hanging positions are a left and right perch that are above the break. Also left and right are two lighting ladders at about 2’ beyond the front of the stage at the sides of the proscenium. And last but not least, there is a pipe on the front of the booths at the back of the house (more than 100’ from stage). **THERE ARE NO OTHER FRONT-OF-HOUSE POSITIONS!**

Sound: Due to fire regulations, front-of-house sound is at the break, house right. All other locations must be discussed before tickets go on sale.

Smoke, Open Flames, and Pyrotechnics: Due to very sensitive smoke detectors and fire regulations, we must be notified at least two months in advance if you wish to use smoke or haze machines. Use of open flames requires two firemen to be on duty within the building. Pyrotechnics must have a New Jersey Licensed pyrotechnician on duty. Aerosols in the dressing rooms are also a problem and not allowed.

Backstage: The basement area is not accessible for road boxes except for carrying them down a set of stairs. Backstage capacity is limited to 150 people.

General Information

Address:

Strand Theater
c/o _____
400 Clifton Ave.
Lakewood, NJ 08701

Production Services:

Technical Director
Christopher 'Crick' Staton
O:(732) 367-7789 x206
F:(732) 367-7819 or
(856) 854-3548
C:(609) 828-2573
E:cricket@strandlakewood.com

Facilities Manager /
Assistant Technical Director
Tony Scherzo
O:(732) 367-7789 x207
F:(732) 367-7819
E:tony@strandlakewood.com

Master Electrician /
House Lighting Designer
Bill Simonelli
O:(732) 367-7789 x206
F:(732) 367-7819

Box Office Services:

Box Office & Front-of-House Manager
Carrie Kaiser
O:(732) 367-7789 x251
F:(732) 367-7819
E:Pattic@strandlakewood.com

Administrative Services:

Executive Director
Theresa Beaugard
O:(732) 367-7789 x205
F:(732) 367-7819
tbeaugard@strandlakewood.com

View of Main Lobby



Grand Staircase



Area Hotels:

Ramada Inn

Rt. 9 and Rt. 70, Toms River, NJ 08755
(732) 905-2626 (1-888-298-2054 Reservations)
\$115 Standard, \$122 King, \$145 Suite, \$165 Jacuzzi
Truck/bus parking, lounge, restaurant, meeting rooms
15 min. south from Strand

Econo Lodge

Rt. 9 and Madison Ave, Lakewood, NJ 08701
(732) 363-8530
\$80 to \$90
Auto parking only
1 min. walk from Strand.

Best Western

1600 Rt. 70, Lakewood, NJ 08701
(732) 367-0900
\$80
Truck/bus parking, lounge, restaurant, meeting rooms
15 min. south from Strand.

Holiday Inn

290 Rt. 37, Toms River, NJ 08753
(732) 244-4000 (1-800-465-4329 Reservations)
Truck/bus parking, lounge, restaurant, meeting rooms, pool
\$70 to \$94
20 min. south from Strand

Hilton

3 Tower Center Boulevard, East Brunswick, NJ 08816
(732) 828-6958
\$180
Truck/bus parking, lounge, restaurant, meeting rooms
45 min. northwest from Strand

New York City hotels about 1 hour drive north.
Atlantic City hotels about 1 hour drive south.
Philadelphia hotels about 1 hour drive south-east

Transportation Services:

- Aries Taxi – (732) 363-1193
- Adex Taxi – (732) 349-8802
- NJ Transit (Bus Routes # 137, 139, 317, 67, 559) - (973) 762-5100
- D'Elegance Transportation (888) 874-4999
- Ultimate Limousine (877) 985-Limo

Restaurants:

McDonalds	Rt. 9N, Howell	5 min. north	(732) 367-7262	Fast food
Wendy's	Rt. 9N, Howell	5 min. north	(732) 367-1155	Fast food
Taco Bell	Rt. 9S, Howell	15 min. north	(732) 364-0015	Fast food
Scooter's Bar & Restaurant	Rt. 9S, Howell	5 min. north	(732) 367-0110	Informal
Dominic's Pizza	Lakewood	5 min. north	(732) 367-1115	Pizza
Bagel Nosh	Lakewood	1 min. walk		Bagels, donuts
Regent	Rt. 9N, Howell	5 min. north	(732) 364-9157	24-hour diner
Ivy League	Rt. 9S, Howell	15 min. south	(732) 370-2206	Upscale

This is only a partial list. Please see map (Attachment C) or talk to local crew for more places and suggestions.

Bars:

Scooter's Bar & Restaurant Rt. 9S, Howell 5 min. north (732) 367-0110

Banks:

First State (ATM)	Rt. 9 & 4 th Street	1 min. walk
First Washington	Rt. 9 & Kennedy Blvd	5 min. south
Wachovia (ATM)	Rt. 88 & Rt. 9	6 min. south

Shopping:

Freehold Mall Rt. 9 & Rt. 33, Freehold (732) 577-1144 25 min. north
Ocean County Mall Hooper & Bay Ave, Toms River (732) 914-9300 20 min. south

Laundry:

Washer, Dryer and Irons available.
Laundromat: Lakewood Center Laundromat, Lakewood (732) 370-0091
Dry Cleaners: Cleaning Station, Lakewood (732) 363-0053

Emergency Numbers:

Emergency: 911

Kimbal Medical Center	Rt. 9 & Prospect St. Lakewood	(732) 363-1900 (732) 886-4525 Emer.	10 min. south
Allergist: Philip Case, M.D.	Rt. 9, Freehold	(732) 577-1242	20 min. north
Chiropractor: Adelpia Chiro Center	Kennedy Blvd, Lakewood	(732) 905-8787	5 min. north
Dentist: B. Srinivasan, D.D.S	Rt. 9, Lakewood		5 min. north
Ear, Nose, Throat: Bruce Peters	Rt. 9, Lakewood	(732) 942-8800	10 min. south
Orthopedist:			
Ob-gyn: Niles Choder, MD	Rt. 9, Lakewood	(732) 364-1290	10 min. south
Optometrist: S&S NuSpecs	Clifton Ave, Lakewood	(732) 905-0788	5 min. south
General Practitioner:	Rt. 9, Howell	(732) 370-3563, no	10 min. north
Howell-Jackson Medical Group		appointment needed	

Handicapped Access:

Twelve (12) wheelchair positions in house left orchestra.
Lobby and adjacent bathrooms all wheelchair accessible.
Infrared assistive listening system available. Large-print programs available with advanced notice.
TDD NJ Relay Service 1-800-852-7899

Picture of handicap area will go here in next release.

Parking:

Picture of parking lot from roof will go here in next release.

Loading dock can only hold one small 24' (7.3m) truck. Vehicles can only be at dock to load/unload. There are two free parking lots available on Fourth Street on either side of Clifton. On-street parking is also available. Truck and bus parking ONLY with advance notification. The lot behind the theater cannot be used for theater parking! Overnight lot parking is available (please call ahead for arrangements). No shore power available. Semi trucks must be arranged at least two months in advance. Please call ahead with vehicle information.

Travel Directions:

Directions hotline: (732) 367-7789 x4

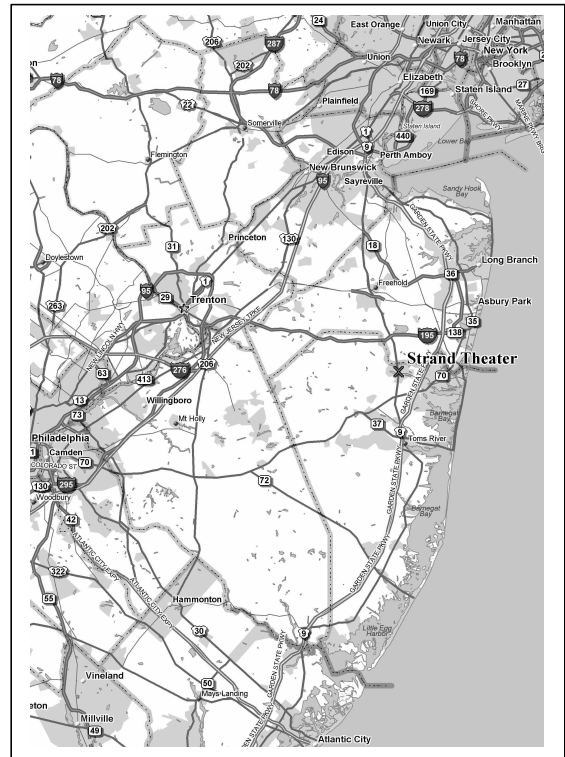
Garden State Parkway southbound: Take exit 91. After paying toll, bear to your right. At the second traffic light make a right turn onto Route 526. Continue for four miles and at the fourth traffic light make a left turn onto Clifton Ave. The theater is one mile down Clifton, at Fourth St.

Garden State Parkway northbound: Take exit 83 to Route 9 North. Travel approximately 9 to 10 miles into Lakewood. After passing Route 88 intersection, make a right onto Fourth Street.

Route 9 southbound: Take into Lakewood and make a left turn onto Fourth Street.

Route 9 northbound: Take into Lakewood and make right turn onto Fourth Street,

Route 195: Take Route 9 South into Lakewood and make a left turn onto Fourth Street.



Time Zone: Eastern Time Zone (US and Canada) (GMT -05:00)

Currency: United States (We do not have the ability to exchange funds or cash company checks.)

Measurement: English (feet and inches)

Language: English (Please call ahead for translator availability.)

Management

Production Room (Touring Office):

None available, may use a dressing room

Microsoft Windows computers with Internet access available for limited use in tech office.

Limited phone use available from tech office and dressing rooms.

Limited fax and copier available in administration office.

Stage Manager's Console:

Standard position is down right just offstage or in perch 10' above stage off stage right.

Has house and work light control.

Phone and Clear-Com headset available.

Limited Inferred video monitors.

Dressing room address microphone.

Secondary position available in booth at back of house or in break (dressing room feed not available).

Picture of stage managers area will go here in next release.

Rehearsal Rooms:

None available

Crew:

We are a nonunion facility. The presenter's management, the artists' representative, and the Strand's technical director shall determine call size. Our trained part-time employees, who are familiar with our equipment and facility, staff all events. One staff member must be present whenever a venue is in use regardless of any other personnel required. Minimum staff size is at the discretion of management and is determined on an event-to-event basis. All Strand equipment must be operated by Strand staff.

House Policies:

Animals: Except when used for handicap assistance or in a performance, animals are not allowed in the Strand. Under no circumstances will performance animals be allowed in the Strand other than during rehearsal and/or performance. This privilege must be secured prior to the load-in.

Backstage access: Members of the audience are not allowed onstage or backstage during a performance or intermission. Access before and after determined on a show-to-show basis. . Backstage capacity cannot exceed 150 persons.

Concession sales: Sales other than for food and drink must be arranged for in advance through the Strand. Prior to sales, the concessions will be audited, location for said sales designated, staffing and commissions mutually agreed upon. Standard commission is 10%. The Strand has exclusive rights to all food and drink sales.

Curtain times: Standard evening curtain time for the Strand is 8 p.m. weekdays, and 7 p.m. Sundays. Standard matinee curtain time is 2 p.m.

Front of house: All house staff, ticket staff, and seating arrangements are furnished and controlled by the Strand box office and house operations.

House access: Access to the house during performance by company members is by ticket only and subject to house seating policy.

House opening: We open the lobby at one hour and the house at 30 minutes prior to curtain. At this time the stage must be clear or the main curtain lowered. Fire announcement must be made within 5 minutes of curtain.

Late seating: As a courtesy to our audience, we ask that at all performances, late seating opportunities are mutually agreed upon.

Photography or recording: Neither is permitted without the express permission of the Strand and all artists present. Flash photography is forbidden at any time! Proof of ASCAP payments required for sales and distribution.

Security: The Strand will make every effort to insure the artists' privacy and property by limiting the access to the stage and dressing rooms while the artists are on the premises. Valuables should not be left in dressing rooms. It is recommended that they be collected by your stage manager prior to the show and kept with the stage manager until the performance is completed.

Signs and decoration: No signs or decorations are allowed on the building exteriors or sidewalks. Decorations or signs shall not be placed in any rooms, hallways, lobbies, or rooms in the building without the permission of the management. The party responsible for damage will pay for any damage caused by improper mounting. Nothing may be mounted on any walls without the express permission of the management. Only bulletin boards may be used.

Smoking and alcohol: Smoking is not permitted anywhere in the buildings. Possession of alcohol in the building must be arranged ahead of time.

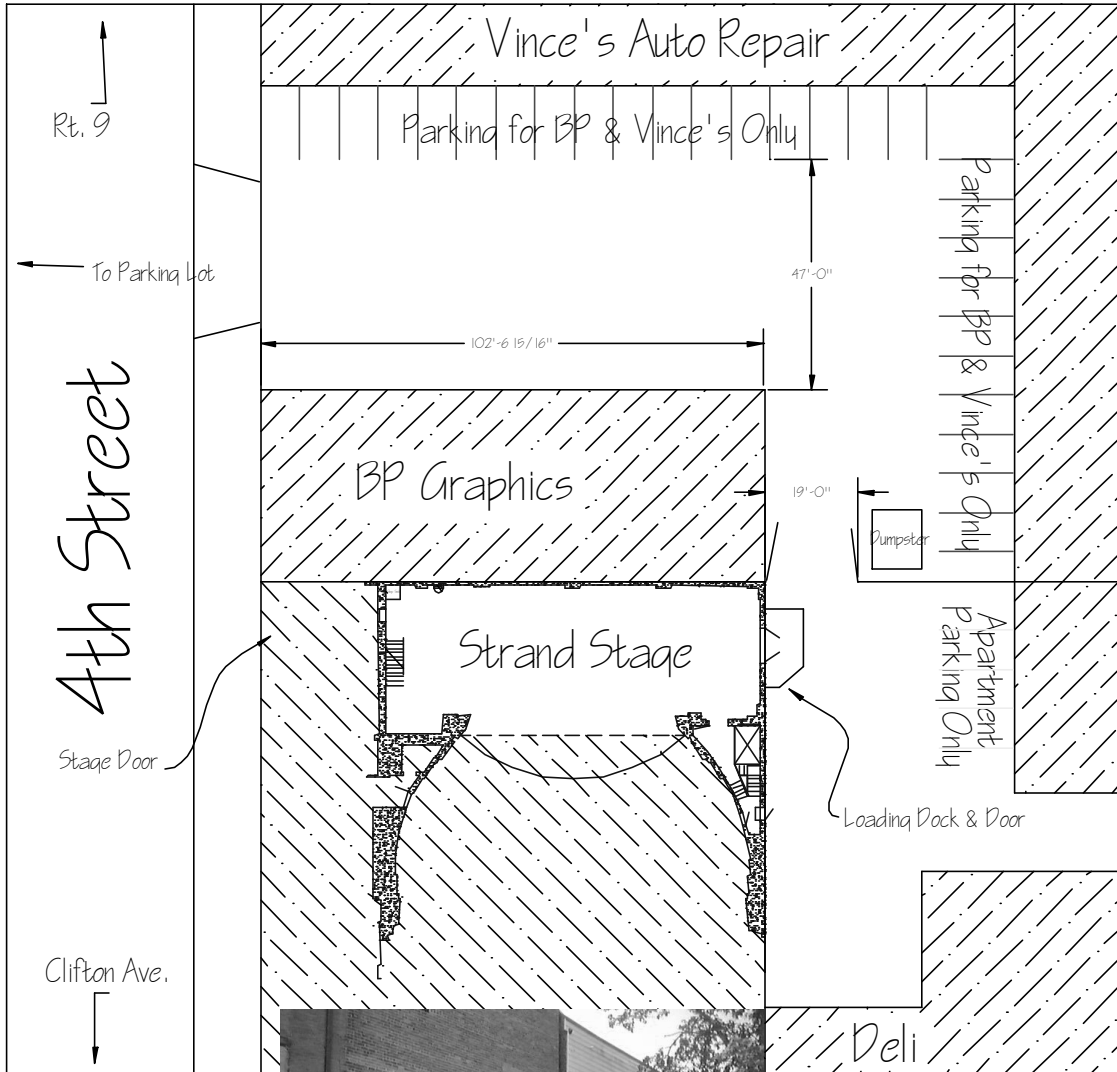
Catering: All catering must be arranged ahead of time through the Strand. Food and beverages are allowed only in the lobby, gallery, and cantina.

Other: House seats are permanent and will not be removed. Stairs into audience, at left and right orchestra, are to be removed before each performance. Balloons are not permitted in the theater.

Load-In Area

Dimensions: Loading dock door is 6' 10 1/2" (6.875m) by 6' 10 1/2" (6.875m). This is the largest opening in the building.

Map:



Carpentry

Seating:

Raked seating: 1,030 seats (362 seats in orchestra, 104 in loge, 288 in mezzanine, 288 in tier).

Twelve (12) spots for wheelchairs house left in orchestra

To farthest seat, 121' (36.88m); to break, 48' (14.63m)

See Attachment B



Stage Dimensions:

Proscenium: 20' 8" high x 42' 4" wide (6.29m x 12.9m). Stage is 38' 6" (11.73m) deep.

From last line set to front edge of pit cover 37' 3" (11.35m)

From last line set to front of stage 28' 3" (8.6m)

From last line set to plaster line 24' 3" (7.39m)

From last line set to front curtain 23' 11" (7.29m)

Wing space, stage left: 11' x 25' (3.35m x 7.62m) includes storage space for ladders.

Wing space stage right: 5' x 25' (1.52m x 7.62m) includes room for rail operators; does not include room behind rail

Grid height: NO GRID AVAILABLE!

Orchestra pit: Cement floor at 6' (1.83m) below stage floor, normally covered, can hold up to 25 people

Stage height: 3' 4" (3.33m) from house floor

Picture of the Stage with the curtain up will go here in next release.

Stage floor:

Masonite-covered, softwood on wood joists, black surface

House Draperies:

House curtain: Maroon velour, guillotine on line set #1 at 0' 4" (.1m) from plaster line, controlled manually from rail stage right

Legs: Four sets @ 12' x 28' (3.66m x 8.53m), black velour, no fullness

Borders: Four @ 8' x 45' (2.44m x 13.72m), black velour, no fullness

Full stage: Two panels @ 25' x 28' (7.62m x 8.53m), black velour, with fullness

Single panel @ 25' x 50' (7.62m x 15.24m), black velour, no fullness

Scrim: Not available, must be supplied by company

Cyclorama: One - Muslin white @ 56' x 30' (17.06m x 9.14m) with minor imperfections

One - Off white with scrim cover, very poor condition

Line Set Data:

Line set plot: See Attachment A

Working height of battens: High trim is 54' (16.45m) and low trim is 4' (1.21m)

Battens: Twenty-two 52' (15.84m) 1½" schedule 40 pipe

Type: All lines are single purchase; locks are at stage floor level

Arbor capacity: Maximum load 1,000 lb. per pipe (450kg)

Available weight: Approx. 10,000 lb. (4,500kg) various sizes and weights

Loading gallery: Stage right at 50' (15.24m) above stage floor

Other heights: Roof at 63' (19.2m), support steel at 58' (17.68m)

Drop Points (Overhead Steel): Left from Center Line at 6' 8" and 19' 2"

Right from Center Line at 5' 5" and 18' 0"

Support Areas:

Crossover: Onstage if the last two line sets are not in use, or under the stage

Access: From stairs stage left and right, and door from hallway stage right

Shop Area:

None available

Notes:

Please call before considering hanging from steel.

There is NO building or painting on stage.

Picture of steel will go here in next release.

Picture of rail will go here in next release.

Policies:

Fire curtain: The free movement of the fire curtain to the stage floor must be maintained at all times.

Scenery and rigging: The Strand reserves the right to inspect all scenery and rigging prior to use. The Strand also reserves the right to make repairs as needed.

Spray painting: No spray painting is allowed onstage or in wardrobe areas. No painting on stage.

Flameproofing: All scenery and properties must be flameproofed before they may be used on stage. Productions must show certification of flameproofing upon request and are subject to inspection by the state fire marshal.

All scenery or set decorations shall be capable of withstanding the standard test as follows:

***Definition:** The standard test for scenery and set decorations shall determine whether or not the materials or substances are capable of carrying fire, flame, or glow when the source of heat and fire is from the burning of an ordinary wooden match. "Scenery and set decorations" are defined as any stage material, paraphernalia, scenery, decorations, drapes, curtains, or other material used for scenery and/or set decorations.*

Procedure:

A) The test shall consist of igniting and burning an ordinary match, which when burning freely shall be held in contact with the material or substance being tested.

B) The test shall be conducted so that the naked flame of the burning match shall be neither aided nor retarded by drafts or currents of air.

C) If the flame from the burning match does not ignite or cause the substance or material being tested to burn or carry a flame or glow upon the removal of the lighted match, the substance or material shall be construed as passing in a satisfactory manner.

***Approval:** All scenery and set decorations as defined above must have approval prior to use.*

Lighting

Power:

Two @ 120/208V, 3-phase 400 amp per leg, in lighting loft 20' (6.09m) (connected to house dimmer rack)
120/208V, 3-phase 100 amp per leg, stage left proscenium wall 7' (2.13m) from stage (cam locks)
Two @ 120/208V, 3-phase 200 amp per leg, stage right behind rail 20' (6.09m) from stage (cam locks)
(Currently, voltage is running at about 121V per leg.)

Dimmers:

192 2.4k dimmers – 2 ETC Sensor Install Rack (DMX512)
No Non-dims available thru dimmer rack (must supply own non-dim control)
Non-dims can be powered and controlled from circuit box stage right
Dimmer racks located in loft 10' off stage floor stage right
Three DMX control lines from booth to stage: two by dimmer and one at stage level
Work lights and house lights cannot be controlled by DMX signal; they are controlled by panel onstage and in light booth.

Control Board:

ETC Insight 108 (Version 2.05b w/512 capacity and single CGA monitor)
Remote focus and remote monitor available onstage
Limited to 108 channels and 200 cues.

House Lights and Work Lights:

Control at stage right (stage manager's console) or lighting booth; panic switched in break stairwell

Circuits (Dimmer per circuit) :

192 @ 2.4kW circuits (all hard wired to dimmer racks)
72 from front of house (12 repeated next to rack)
96 from onstage 12-channel multis (may be supplemented with extra cable runs)
24 next to rack with runs to side boom positions.

Circuit Chart:

<u>Location</u>	<u>Dimmer #</u>
Booth rail	FOH 1-12 (Repeated next to racks)
Stage left perch	FOH 13-30
Stage right perch	FOH 31-48
Stage left ladder	FOH 49-60 (54-60 Repeated next to racks)
Stage right ladder	FOH 61-72 (66 -72 Repeated next to racks)
Lighting/SM loft next to racks	73-96
1 st Electric	Multi A&B 97-120
2 nd Electric	Multi C&D 121-144
3 rd Electric	Multi E&F 144-168
4 th Electric	Multi G&H 169-192

Front-of-House Transfer:

There is no cable access between front of house and stage. Only the Strand's built-in circuits may be used. All front of house must be powered by Strand dimmers

Front-of-House Positions:

Position	From PL	Height	From CL	Direct Shoot to PL
Perch left A pipe	50' 6" (15.39m)	33' 6" (10.21m)	22' 5" (6.83m) left	59' 6" (18.13m)
Perch left B pipe	50' 6" (15.39m)	31' 2" (9.5m)	22' 5" (6.83m) left	58' 4" (17.78m)
Perch left C pipe	50' 6" (15.39m)	29' 2" (8.89m)	22' 5" (6.83m) left	57' 5" (17.5m)
Perch left D pipe	50' 6" (15.39m)	27' (8.23m)	22' 5" (6.83m) left	56' 5" (17.19m)
Perch right A pipe	50' 6" (15.39m)	33' 6" (10.21m)	22' 5" (6.83m) right	59' 6" (18.13m)
Perch right B pipe	50' 6" (15.39m)	31' 2" (9.5m)	22' 5" (6.83m) right	58' 4" (17.78m)
Perch right C pipe	50' 6" (15.39m)	29' 2" (8.89m)	22' 5" (6.83m) right	57' 5" (17.5m)
Perch right D pipe	50' 6" (15.39m)	27' (8.23m)	22' 5" (6.83m) right	56' 5" (17.19m)
Booth pipe	111' (33.83m)	20' (6.09m)	N/A	114' (34.74m)
Follow spots	115' (35.05m)	24' (7.31m)	3' (.91m) left & right	120' (36.57m)
Stage left ladder	4' (1.22m)	5' 7" (1.7m) to 20' 8" (6.92m)	23' 1" (7.03m) left	4' (1.22m) to 15' (4.57m)
Stage right ladder	4' (1.22m)	5' 7" (1.7m) to 20' 8" (6.92m)	23' 1" (7.03m) right	4' (1.22m) to 15' (4.57m)

Perches are each 12' (3.66m) wide; measurements are to center of pipes

Booth pipe is 32' (9.75m) wide; measurement is to center of pipe

Equipment Inventory:

Instruments:

23	Altman 360Q 6x22
40	Altman 360Q 6x16
38	Altman 360Q 6x12
38	Altman 360Q 6x9
32	Altman 360Q 6x22
50	Par 64

(see Lightwrite data for lamping)

Follow spots: Two Lycian Super Star 1.2 (1200HB)

Hardware:

6	R40 striplights: 4-circuit, 16-cell
100	10" frames
200	7" frames
30	Pattern holders
4	Boom bases and 12' (3.65m) pipes
80	7" doughnuts
30	Tube extenders
38	Side arms

Cable: Approx. 4,019' (1225m) of cable in lengths of 5', 10', 15', 25', 40', 50', and 100': 12/2SO 2-pin and ground stage plug, no twist lock adapters available

Approx. 40 two-fers, various Edison-to-stage-pin adapters are available

200' (30.48m) DMX cable

Film, video, and projection equipment: None in stock

Notes:

Local lighting rental companies:

Starlight Productions, Cherry Hill, NJ, 856-489-9000 (1-hour drive)

Earl's Girls, Egg Harbor City, NJ, (609) 695-6900 (1-hour drive)

CDK Lighting & Audio, Toms River, NJ, (732) 892-4836 (15-min. drive)

Fourth Phase (Production Arts), North Bergen, NJ, (201) 758-4000 (1 ½ hour drive)

Local video equipment rental companies:

Starlight Productions, Cherry Hill, NJ, 856-489-9000 (1-hour drive)

Audio Visual Center, Philadelphia, PA, (215) 563-6872 (1 1/2 hour drive)

Bill's Audio & Video (Warmyr, Inc.), Barnegat, NJ, (609) 698-9547 (45-min. drive)

Front of House Lighting Perch



Lighting Ladder



Sound

Power:

Two @ 120/208V, 3-phase 400 amp per leg, in lighting loft 20' (6.09m) (connected to house dimmer rack)

120/208V, 3-phase 200 amp per leg, stage left proscenium wall 7' (2.13m) from stage (cam locks)

Two @ 120/208V, 3-phase 200 amp per leg, stage right behind rail 20' (6.09m) from stage (cam locks)

(Currently, voltage is running at about 121V per leg.)

Wiring:

One 16-channel snake from pit to house right sound position

Control Locations:

Sound booth with operable windows 112' (34.13m) from stage; currently no connections available

Center break house left, no equipment, 60' (18.28) snake run from stage.

Hearing-Assisted System:

Senhiser infrared listening system, with six units stored with charger at concession stand, fed by microphones on either side of stage or program feed stage right

Monitor/Paging System:

Booths, technical office, all dressing rooms, and hallways; fed by microphones on either side of stage. Paging microphone at stage manager's console, booth, and tech office

Production Communications:

Clear-Com 2-channel base at stage manager's console

Stations stage left and right, perches, booths, break, and basement

Permanent boxes in perches, light booth, cantina, and tech office

Nine belt packs (3, 2 channels)

Eight single-muff headsets

One double-muff headset

Two telephone handsets

Picture of sound location will go here in next release.

Equipment Inventory:

Mixing consoles: Mackie 1604-VLZ Pro

Fixed speaker: None

Portable speakers: Four Mackie SRM 450 (300w powered)

Microphones: Two SM-58, 3 PCC (one wireless transmitter, plugs into SM-58)

Playback: Denon stereo pitchable CD/tape player

Signal processors: None

Amplifiers: None

Cable: 500' (152m) in 25', 10', and four at 100', limited adapters available

Notes:

New Sound system in pre installation phase please check with Technical Director for availability.

Touring companies are encouraged to supply all their own sound systems.

Rental speakers must come with their own amps.

Sound companies are encouraged to use all their own systems.

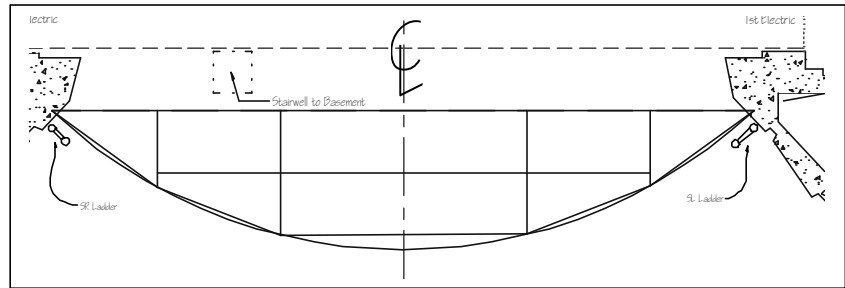
Acoustics of the theater are considered excellent.

House-preferred sound company: L&M Sound Design, Staten Island, NY, (718) 979-4213

Props

Orchestra Pit:

Capacity: 25 musicians
See Carpentry for more info
No storage room in pit area
Pit normally covered



Music:

Chairs: Various folding chairs of various quality. (also see gallery specifications)

Stands: (60) Sixty

Stand lights: None

Conductor podiums: One 8" (.2m) stand

Pianos: old Steinway upright

Picture of pit open will go here in next release.

Orchestra Shell:

None available

Platforms:

Four 4x8 platform legged at 8"

Dance Floor:

None available

We use gaffer's tape to lay floor, and do not allow the use of rosin on rented floors.

Lecterns:

One small wooden, black poor quality

Tables/Chairs:

See Gallery specifications.

Notes:

Back line (Platforms, musical instruments, pianos, etc.) rental companies:

L&M Sound Design, Staten Island, NY, (718) 979-4213

General rental company: Taylor Rental, Brick, NJ, (732) 829-6500

Wardrobe

Dressing Rooms:

A & B: Four-person “star” in stage right hallway, stage level with shared bathrooms

C & D: Twelve-person each, under stage

E: Eight-person, under A & B dressing rooms (under stage)

Cast/crew bathrooms in basement, stage right

See Attachment D for locations

Picture of Dressing Room A
will go here in next release.

Picture of Dressing Room C
will go here in next release.

Wardrobe Area: None available, may use dressing room or Cantina

Irons: Two

Ironing boards: One

Steamers: None

Washer/dryer: Standard size washer and dryer available in Cantina

Racks/hangers: Six heavy duty racks available (supply of hangers)
12 coat racks available.

Quick-Change Booths: None

Other Spaces

Gallery:

Tables/Chairs:

- 15 - 5' round wood Tables
- 2 – 8' rectangular wood banquet tables
- 8 – 6' rectangular wood banquet tables
- 200 - Fine wood maroon armless chairs
- 52 – Fine wood maroon armed chairs
(House & Lobby use only)
- 24 – Folding chairs
- 36 – Mettle w/blue fabric armless chairs
(for Dressing Rooms)
- 10 – Plastic Molded yellow chairs
(for Dressing Rooms)

Table clothes, silverware and dishes available for limited use.

Picture of Gallery will go here in next release.

Sound/Video/Carpentry:

Sound system from theater available if not in use. Built in system in pre installation phase. See sound, lighting and carpentry sections equipment for availability.

Kitchen:

Refrigerator, dishwasher, microwave and warming oven available.
3 – 30 cup coffee pots available for limited use.
Limited storage space may be available.

Picture of kitchen will go here in next release.



Line Set Plot (Attachment A)

The Strand Theater – Lakewood, NJ

Show: _____

Date: ____/____/____ to ____/____/____

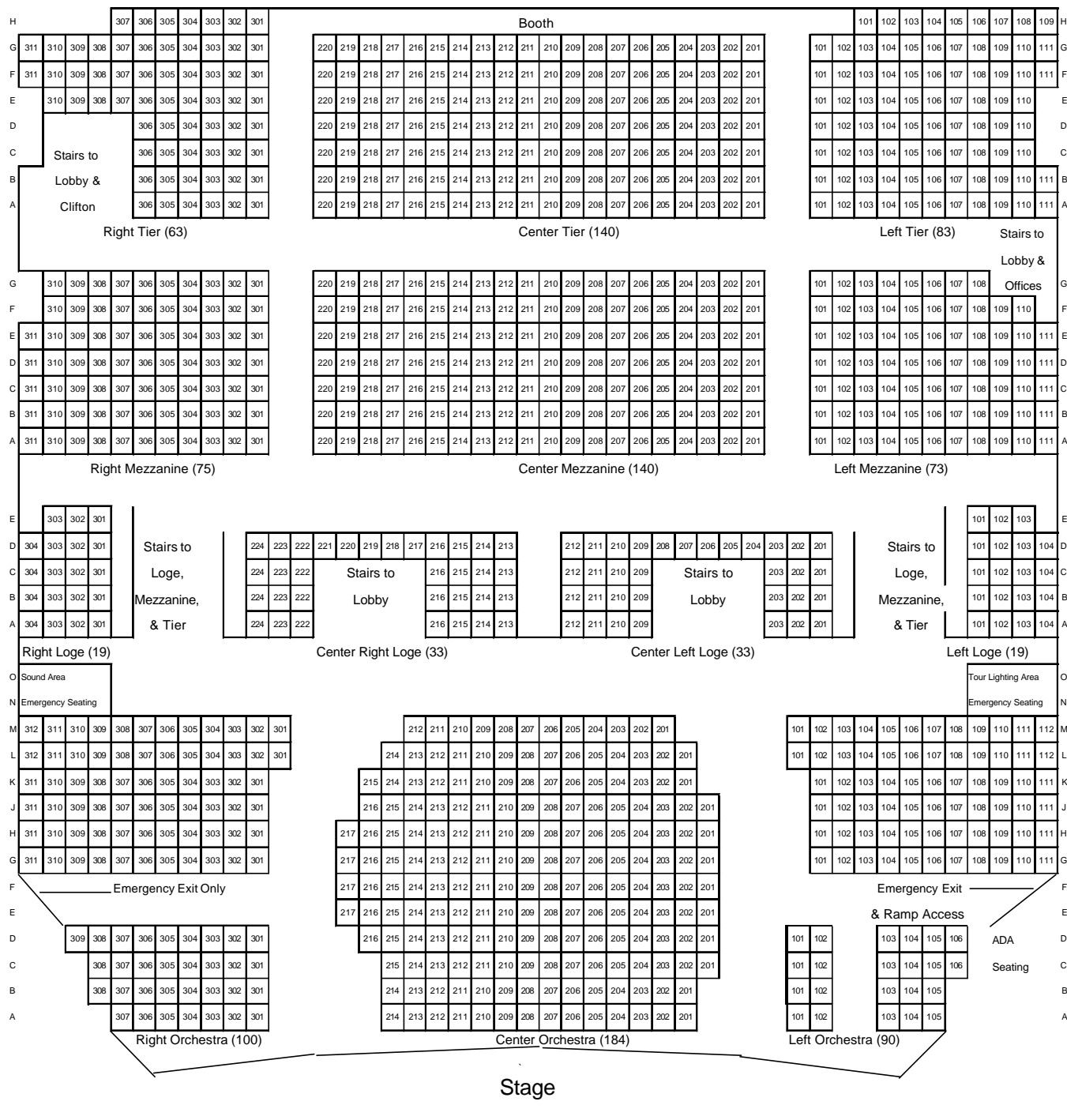
Line #	From P.L.	Trim	Weight	Use
0	0' 0" (0m)	---	---	Fire Curtain / Hard Border
1	0' 4" (.101m)			Main Rag (Guillotine Type) (lb.)
2	1' 0" (.304m)			<i>Legs #1</i>
3	1' 6" (.457m)			
4	3' 0" (.914m)			Electric #1
5	4' 8" (1.42m)			
6	5' 3" (1.6m)			<i>Border #1</i>
7	6' 6" (1.98m)			<i>Legs #2</i>
8	7' 2" (2.18m)			Electric #2
9	8' 6" (2.59m)			
10	9' 6" (2.89m)			
11	10' 5" (3.17m)			
12	12' 0" (3.66m)			<i>Border #2</i>
13	13' 2" (4.01m)			<i>Leg #3</i>
14	14' 8" (4.47m)			Electric #3
15	15' 6" (4.72m)			
16	16' 6" (5.03m)			<i>Border #3(FSB #1)</i>
17	17' 6" (5.33m)			<i>Legs #4</i>
SR Entrance				
18	19' 9" (6.02m)			Electric #4
19	22' 8" (6.91m)			
20	23' 2" (7.06m)			
21	23' 10" (7.26m)			<i>CYC</i>
22	24' 3" (7.39m)			<i>FSB #2</i>

Items in italics are our Rep. Plot and may be moved or removed. Please do not move the Electrics unless absolutely necessary
 Open spaces denote future line set positions. We do not have a grid. All weight is marked above pipe weight unless noted.
 Empty pipe: Approx. 175 lb. (78.75kg) | Full stage black: 150 lb. (67.5kg) | Leg set: 70 lb. (31.5kg) | Border: 70lb (31.5kg)
 Out height 52' 8" (16.05m) | In height 4' (1.22m) | Max arbor capacity 1,000 lb. (450kg) |

Seating Chart (Attachment B)

Tier = 286 Mezzanine = 288 Loge = 104 Orchestra = 374
 ADA = 22 chairs or 11 wheelchairs Emergency Reserved Seats = 30
 Salable Capacity = 1030 Maximum Capacity = 1066
 Using stairs from stage will remove 47 seats in first 2 rows.

For Information Purposes Only
 Does Not Constitute Seat Availability
 Do Not Distribute.



Local Area Map (Attachment C)

Compiled and printed using Street Atlas



Near Theater

Bagel Nosh
Wawa

North on Rt. 9 from Strand

Econo Lodge
Crystal Diner
Regent Diner
Acme
Liquor store
McDonalds
Wendy
Scooter's Bar & Grill
Wal-Mart
Staples
K-Mart
Sears Hardware
Arby's
Pep Boys
Home Depot

South on Rt. 9 from Strand

Wawa
Hospital
Stop & Shop
Burger King
Ramada Inn (at Rt. 70)

On Rt. 70 Between 9 & Parkway

Ramada Inn
Holiday Inn

Near Ocean County Mall

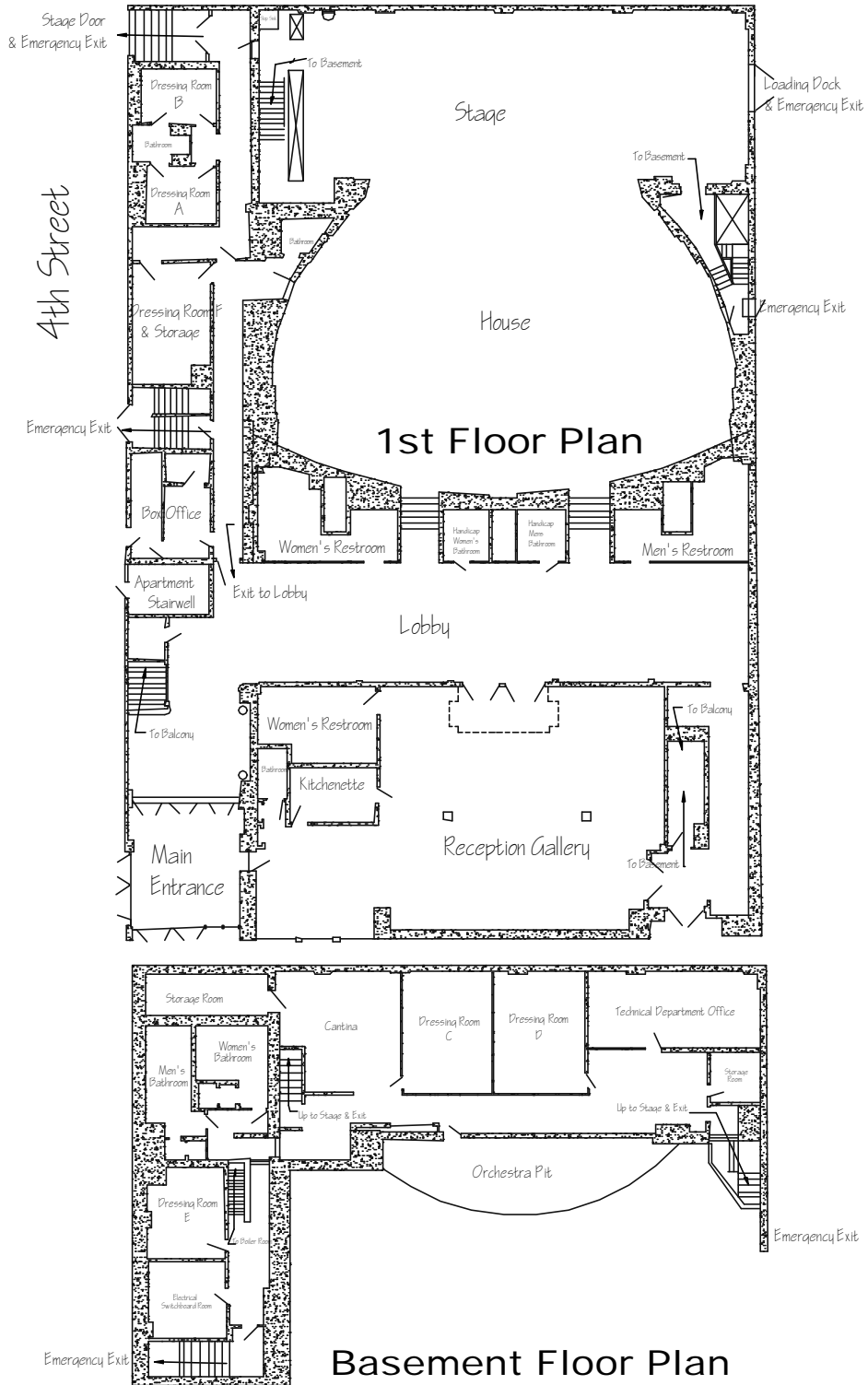
Basil T
Lowe's Cinema
Red Lobster
Denny's
Olive Garden
Lenny's Deli

Directions to Ocean County Mall Area:

From theater take 4th Street to Rt. 9 south
Take Rt. 9 south to Rt. 571.
Mall will be on your left

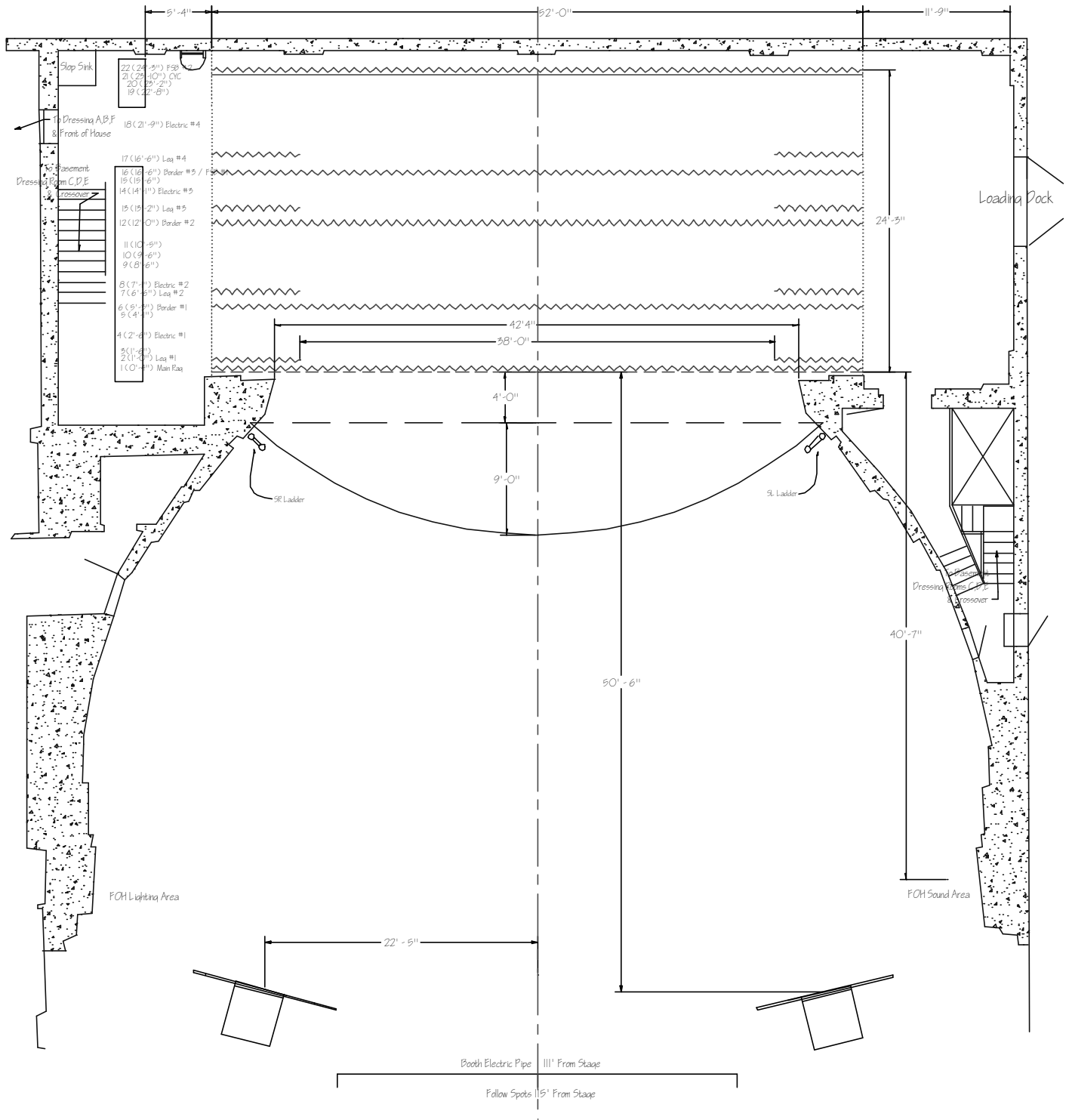
Building Floor Plans (Attachment D)

Not to Scale



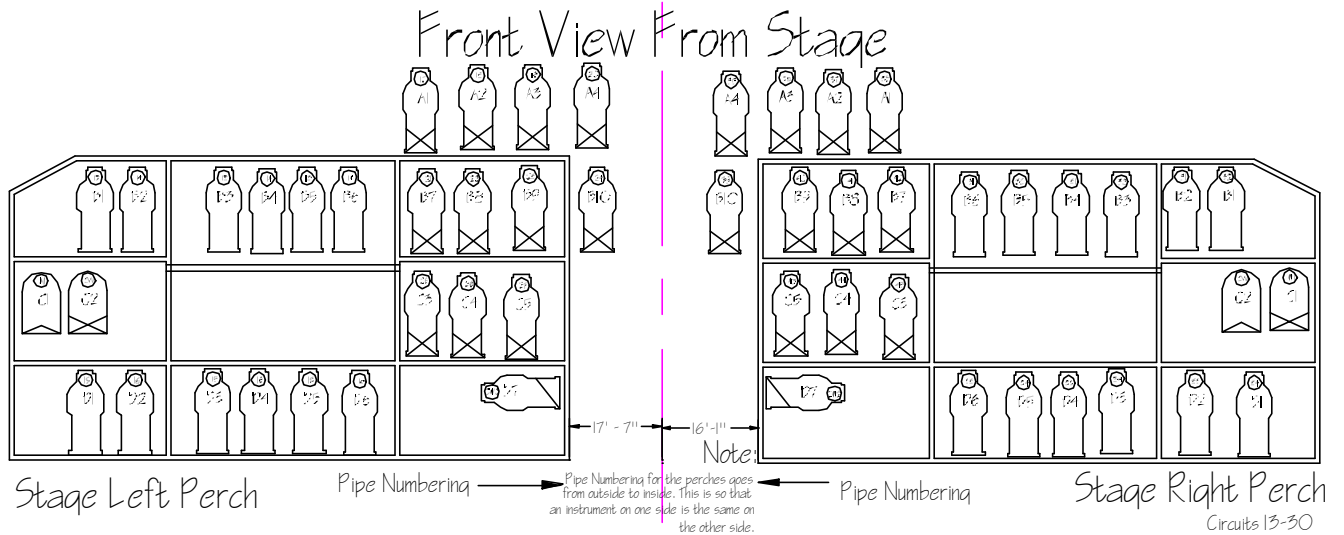
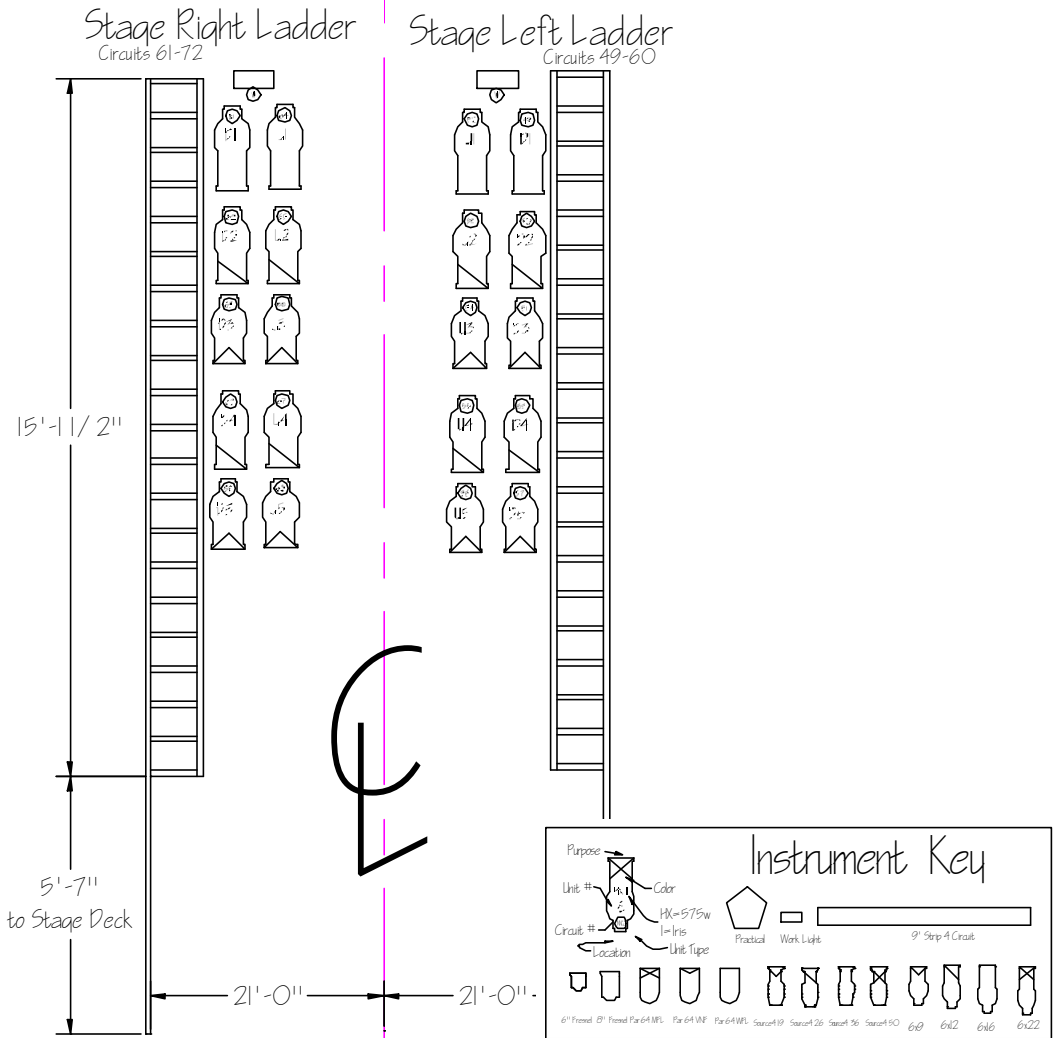
Stage Diagram (Dimensioned) (Attachment E)

Not to Scale



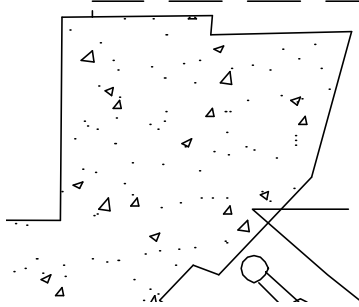
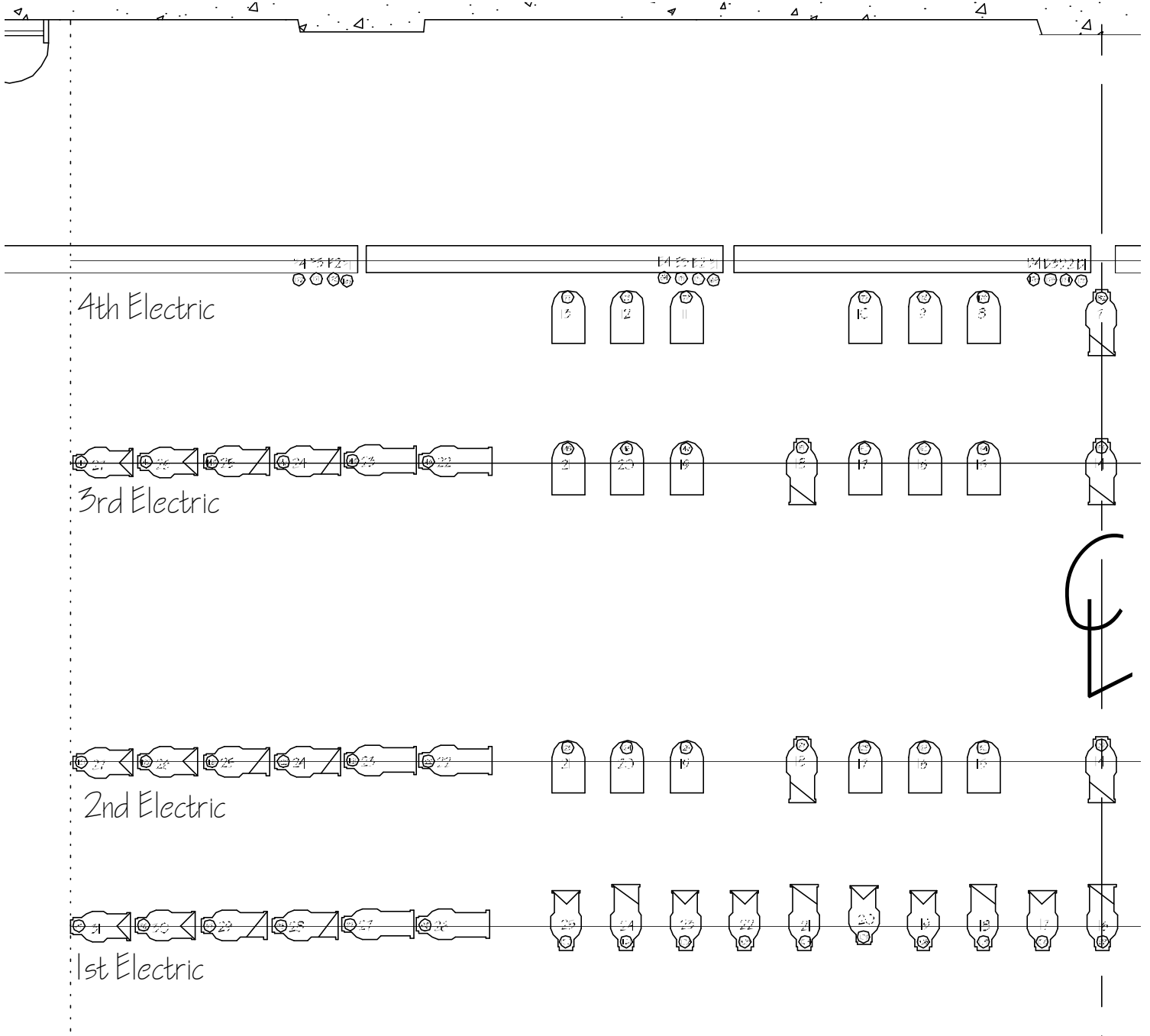
FOH Light Plot (Attachment F)

(Not to Scale)



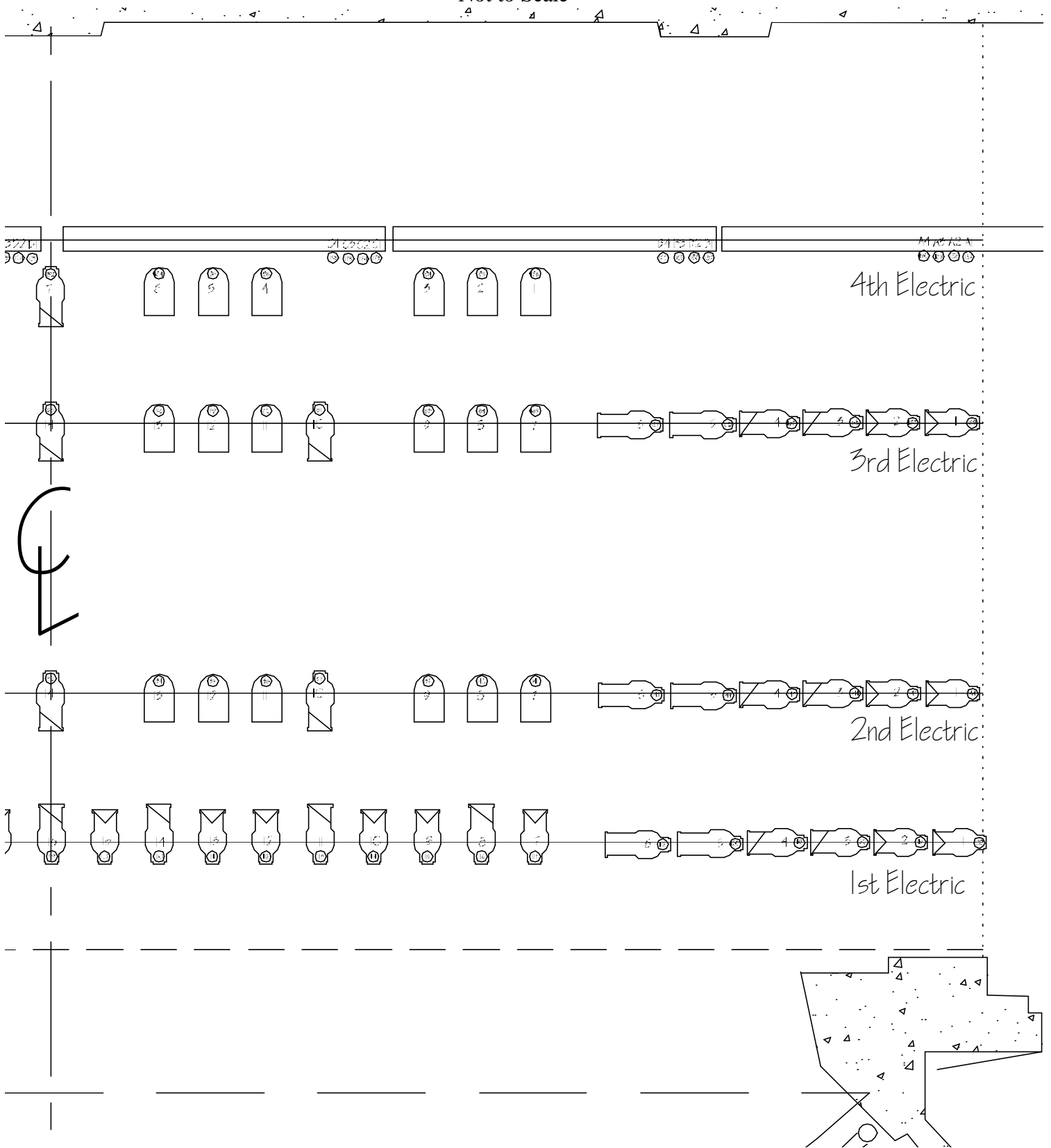
Stage Light Plot (Stage Right) (Attachment G)

Not to Scale

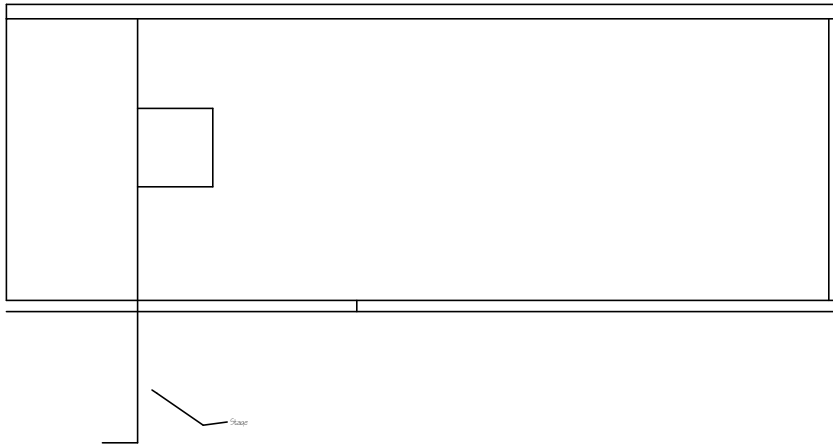


Stage Light Plot (Stage Left) (Attachment G)

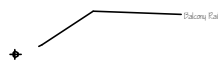
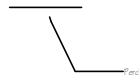
Not to Scale



Section (Attachment H)



Section not yet complete



Strand Repertory Plot (Attachment I) INSTRUMENT SCHEDULE

Page 31 06 Oct 2003

Unit#	Instrument Type	Wattage	Purpose	Color & Template	Chn	Dim
	Booth Rail					5
						6
						7
						8
						1
						2
						3
						4
						9
						10
						11
						12

Strand Repertory Plot (Attachment I) INSTRUMENT SCHEDULE

Page 32 06 Oct 2003

Unit#	Instrument Type	Wattage	Purpose	Color & Template	Chn	Dim
SL Perch						
						29
						30
						28
A1	6x22 HX	575w			(1)	17
A2	6x22 HX	575w			(1)	18
A3	6x22 HX	575w			(2)	19
A4	6x22 HX	575w			(2)	20
B1	6x16 HX	575w	Front Wash 1		(13)	13
B2	6x16 HXI	575w	Front Wash 2		(14)	14
B3	6x16 HX	575w	Front Wash 1		(13)	13
B4	6x16 HXI	575w	Front Wash 2		(14)	14
B5	6x16 HX	575w	Front Wash 1		(13)	13
B6	6x16 HXI	575w	Front Wash 2		(14)	14
B7	6x22 HX	575w			(7)	21
B8	6x22 HX	575w			(7)	22
B9	6x22 HX	575w			(8)	23
B10	6x22 HX	575w			(8)	24
C1	PAR64 VNF	1kw	Work	N/C		
C2	PAR64 MFL	1kw	Curt. Warm	R34		
C3	6x22 HXI	575w			(51)	25
C4	6x22 HXI	575w			(52)	26
C5	6x22 HXI	575w			(53)	27
D1	6x16 HX	575w	Front Wash 3		(15)	15
D2	6x16 HX	575w	Front Wash 4		(16)	16
D3	6x16 HX	575w	Front Wash 3		(15)	15
D4	6x16 HX	575w	Front Wash 4		(16)	16
D5	6x16 HX	575w	Front Wash 3		(15)	15
D6	6x16 HX	575w	Front Wash 4		(16)	16
D7	6x12	1kw	Opera Box	R33		

Strand Repertory Plot (Attachment I) INSTRUMENT SCHEDULE

Page 33 06 Oct 2003

Unit#	Instrument Type	Wattage	Purpose	Color & Template	Chn	Dim
SR Perch						
						48
						46
						47
A1	6x22 HX	575w			(75)	38
A2	6x22 HX	575w			(75)	37
A3	6x22 HX	575w			(3)	36
A4	6x22 HX	575w			(3)	35
B1	6x16 HX	575w	Front Wash 1		(14)	32
B2	6x16 HXI	575w	Front Wash 2		(13)	31
B3	6x16 HX	575w	Front Wash 1		(14)	32
B4	6x16 HXI	575w	Front Wash 2		(13)	31
B5	6x16 HX	575w	Front Wash 1		(14)	32
B6	6x16 HXI	575w	Front Wash 2		(13)	31
B7	6x22 HX	575w			(76)	42
B8	6x22 HX	575w			(76)	41
B9	6x22 HX	575w			(9)	40
B10	6x22 HX	575w			(9)	39
C1	PAR64 VNF	1kw	Work	N/C		
C2	PAR64 MFL	1kw	Curt. Warm	R34		
C3	6x22 HXI	575w			(56)	45
C4	6x22 HXI	575w			(55)	44
C5	6x22 HXI	575w			(54)	43
D1	6x16 HX	575w	Front Wash 3		(15)	34
D2	6x16 HX	575w	Front Wash 4		(16)	33
D3	6x16 HX	575w	Front Wash 3		(15)	34
D4	6x16 HX	575w	Front Wash 4		(16)	33
D5	6x16 HX	575w	Front Wash 3		(15)	34
D6	6x16 HX	575w	Front Wash 4		(16)	33
D7	6x12	1kw	Opera Box	R33		

Strand Repertory Plot (Attachment I) INSTRUMENT SCHEDULE

Unit#	Instrument Type	Wattage	Purpose	Color & Template	Chn	Dim
SL Ladder						60
						58
						59
D1	6x16 HX	575w	High Side 2L		(25)	49
D2	6x12 HX	575w	High Side 2L		(25)	50
D3	6x9 HX	575w	High Side 2L		(25)	51
D4	6x12	1kw			(78)	55
D5	6x9	750w	Conductor Special		(79)	57
U1	6x16 HX	575w	High Side 1L		(17)	52
U2	6x12 HX	575w	High Side 1L		(17)	53
U3	6x9 HX	575w	High Side 1L		(17)	54
U4	6x12	1kw			(78)	55
U5	6x9	750w			(78)	56

SR Ladder

						71
						72
						70
D1	6x16 HX	575w	High Side 2R		(26)	61
D2	6x12 HX	575w	High Side 2R		(26)	62
D3	6x9 HX	575w	High Side 2R		(26)	63
D4	6x12	1kw			(77)	67
D5	6x9	750w	Conductor Special		(79)	69
U1	6x16 HX	575w	High Side 1R		(18)	64
U2	6x12 HX	575w	High Side 1R		(18)	65
U3	6x9 HX	575w	High Side 1R		(18)	66
U4	6x12	1kw			(77)	67
U5	6x9	750w			(77)	68

Strand Repertory Plot (Attachment I) INSTRUMENT SCHEDULE

Page 35 06 Oct 2003

Unit#	Instrument Type	Wattage	Purpose	Color & Template	Chn	Dim
						118
1	6x9 HX	575w	High Side 2L		(27)	120
2	6x9 HX	575w	High Side 1L		(19)	119
3	6x12 HX	575w	High Side 2L		(27)	120
4	6x12 HX	575w	High Side 1L		(19)	119
5	6x16 HX	575w	High Side 2L		(27)	120
6	6x16 HXI	575w	High Side 1L		(19)	119
7	6x9	750w			(4)	117
8	6x12	1kw			(57)	116
9	6x9	750w			(10)	115
10	6x9	750w			(4)	114
11	6x12	1kw			(58)	113
12	6x9	750w			(10)	112
13	6x9	1kw			(5)	111
14	6x12	1kw			(59)	110
15	6x9	750w			(11)	109
16	6x12 I	1kw			(60)	99
17	6x9	750w			(5)	108
18	6x12	1kw			(61)	107
19	6x9	750w			(11)	106
20	6x9	750w			(6)	105
21	6x12 I	1kw			(62)	104
22	6x9	750w			(12)	103
23	6x9	1kw			(6)	102
24	6x12	750w			(63)	101
25	6x9	750w			(12)	100
26	6x16 HXI	575w	High Side 1R		(20)	98
27	6x16 HX	575w	High Side 2R		(28)	97
28	6x12 HX	575w	High Side 1R		(20)	98
29	6x12 HX	575w	High Side 2R		(28)	97
30	6x9 HX	575w	High Side 1R		(20)	98
31	6x9 HX	575w	High Side 2R		(28)	97

Strand Repertory Plot (Attachment I) INSTRUMENT SCHEDULE

Unit#	Instrument Type	Wattage	Purpose	Color & Template	Chn	Dim
2nd Electric						128
						142
						139
						131
						133
1	6x9 HX	575w	High Side 2L		(29)	144
2	6x9 HX	575w	High Side 1L		(21)	143
3	6x12 HX	575w	High Side 2L		(29)	144
4	6x12 HX	575w	High Side 1L		(21)	143
5	6x16 HX	575w	High Side 2L		(29)	144
6	6x16 HX	575w	High Side 1L		(21)	143
7	PAR64 WFL	1kw	Down 1		(34)	141
8	PAR64 WFL	1kw	Down 2		(40)	140
9	PAR64 WFL	1kw	Down 3		(46)	139
10	6x12	1kw			(64)	137
11	PAR64 WFL	1kw	Down 1		(34)	136
12	PAR64 WFL	1kw	Down 2		(40)	135
13	PAR64 WFL	1kw	Down 3		(46)	134
14	6x12	1kw			(65)	132
15	PAR64 WFL	1kw	Down 3		(45)	130
16	PAR64 WFL	1kw	Down 2		(39)	129
17	PAR64 WFL	1kw	Down 1		(33)	128
18	6x12	1kw			(66)	127
19	PAR64 WFL	1kw	Down 3		(45)	125
20	PAR64 WFL	1kw	Down 2		(39)	124
21	PAR64 WFL	1kw	Down 1		(33)	123
22	6x16 HX	575w	High Side 1R		(22)	122
23	6x16 HX	575w	High Side 2R		(30)	121
24	6x12 HX	575w	High Side 1R		(22)	122
25	6x12 HX	575w	High Side 2R		(30)	121
26	6x9 HX	575w	High Side 1R		(22)	122
27	6x9 HX	575w	High Side 2R		(30)	121

Strand Repertory Plot (Attachment I) INSTRUMENT SCHEDULE

Unit#	Instrument Type	Wattage	Purpose	Color & Template	Chn	Dim
3rd Electric						
						155
						163
						157
						152
						166
1	6x9 HX	575w	High Side 2L		(31)	168
2	6x9 HX	575w	High Side 1L		(23)	167
3	6x12 HX	575w	High Side 2L		(31)	168
4	6x12 HX	575w	High Side 1L		(23)	167
5	6x16 HX	575w	High Side 2L		(31)	168
6	6x16 HX	575w	High Side 1L		(23)	167
7	PAR64 WFL	1kw	Down 1		(36)	165
8	PAR64 WFL	1kw	Down 2		(42)	164
9	PAR64 WFL	1kw	Down 3		(48)	163
10	6x12	1kw			(67)	161
11	PAR64 WFL	1kw	Down 1		(36)	160
12	PAR64 WFL	1kw	Down 2		(42)	159
13	PAR64 WFL	1kw	Down 3		(48)	158
14	6x12	1kw			(68)	156
15	PAR64 WFL	1kw	Down 3		(47)	154
16	PAR64 WFL	1kw	Down 2		(41)	153
17	PAR64 WFL	1kw	Down 1		(35)	152
18	6x12	1kw			(69)	151
19	PAR64 WFL	1kw	Down 3		(47)	149
20	PAR64 WFL	1kw	Down 2		(41)	148
21	PAR64 WFL	1kw	Down 1		(35)	147
22	6x16 HX	575w	High Side 1R		(24)	146
23	6x16 HX	575w	High Side 2R		(32)	145
24	6x12 HX	575w	High Side 1R		(24)	146
25	6x12 HX	575w	High Side 2R		(32)	145
26	6x9 HX	575w	High Side 1R		(24)	146
27	6x9 HX	575w	High Side 2R		(32)	145

Strand Repertory Plot (Attachment I) INSTRUMENT SCHEDULE

Unit#	Instrument Type	Wattage	Purpose	Color & Template	Chn	Dim
4th Electric						
						183
						192
						191
						182
						181
1	PAR64 WFL	1kw	Down 1		(38)	186
2	PAR64 WFL	1kw	Down 2		(44)	185
3	PAR64 WFL	1kw	Down 3		(50)	184
4	PAR64 WFL	1kw	Down 1		(38)	186
5	PAR64 WFL	1kw	Down 2		(44)	185
6	PAR64 WFL	1kw	Down 3		(50)	184
7	6x12	1kw			(70)	182
8	PAR64 WFL	1kw	Down 3		(49)	179
9	PAR64 WFL	1kw	Down 2		(43)	178
10	PAR64 WFL	1kw	Down 1		(37)	177
11	PAR64 WFL	1kw	Down 3		(49)	179
12	PAR64 WFL	1kw	Down 2		(43)	178
13	PAR64 WFL	1kw	Down 1		(37)	177
A1	Strip R40	1200w	Cyc 1		(71)	187
A2	Strip R40	1200w	Cyc 2		(72)	188
A3	Strip R40	1200w	Cyc 3		(73)	189
A4	Strip R40	1200w	Cyc 4		(74)	190
B1	Strip R40	1200w	Cyc 1		(71)	187
B2	Strip R40	1200w	Cyc 2		(72)	188
B3	Strip R40	1200w	Cyc 3		(73)	189
B4	Strip R40	1200w	Cyc 4		(74)	190
C1	Strip R40	1200w	Cyc 1		(71)	173
C2	Strip R40	1200w	Cyc 2		(72)	174
C3	Strip R40	1200w	Cyc 3		(73)	175
C4	Strip R40	1200w	Cyc 4		(74)	176
D1	Strip R40	1200w	Cyc 1		(71)	173
D2	Strip R40	1200w	Cyc 2		(72)	174
D3	Strip R40	1200w	Cyc 3		(73)	175
D4	Strip R40	1200w	Cyc 4		(74)	176
E1	Strip R40	1200w	Cyc 1		(71)	169
E2	Strip R40	1200w	Cyc 2		(72)	170
E3	Strip R40	1200w	Cyc 3		(73)	171
E4	Strip R40	1200w	Cyc 4		(74)	172

Strand Repertory Plot (Attachment I) INSTRUMENT SCHEDULE

Unit#	Instrument Type	Wattage	Purpose	Color & Template	Chn	Dim
4th Electric						
F1	Strip R40	1200w	Cyc 1		(71)	169
F2	Strip R40	1200w	Cyc 2		(72)	170
F3	Strip R40	1200w	Cyc 3		(73)	171
F4	Strip R40	1200w	Cyc 4		(74)	172

Boom L1

						91
1	PAR64 MFL	1kw			(81)	74
2	PAR64 WFL	1kw			(81)	74
3	6x12	1kw			(81)	80
4	6x9	750w			(81)	86

Boom R1

						92
1	PAR64 MFL	1kw			(80)	73
2	PAR64 WFL	1kw			(80)	73
3	6x12	1kw			(86)	79
4	6x9	750w			(92)	85

Boom L2

						93
1	PAR64 MFL	1kw			(83)	76
2	PAR64 WFL	1kw			(83)	76
3	6x12	1kw			(89)	82
4	6x9	750w			(95)	88

Boom R2

						94
1	PAR64 MFL	1kw			(94)	75
2	PAR64 WFL	1kw			(88)	75
3	6x12	1kw			(82)	81
4	6x9	750w			(82)	87

Boom L3

						95
1	PAR64 MFL	1kw			(97)	78
2	PAR64 WFL	1kw			(91)	78
3	6x12	1kw			(85)	84
4	6x9	750w			(85)	90

Strand Repertory Plot (Attachment I) INSTRUMENT SCHEDULE

Page 40 06 Oct 2003

Unit#	Instrument Type	Wattage	Purpose	Color & Template	Chn	Dim
Boom R3						96
1	PAR64 MFL	1kw			(84)	77
2	PAR64 WFL	1kw			(84)	77
3	6x12	1kw			(90)	83
4	6x9	750w			(96)	89