



The Historic Strand Theater of Lakewood, NJ

Quick Technical Information

Front of House

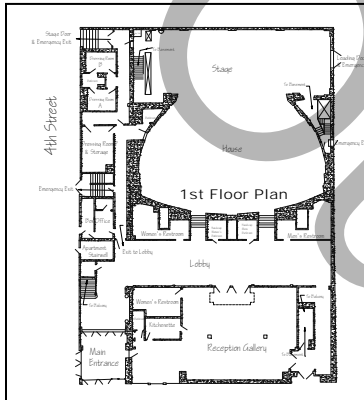
Raked seating: 1,030 seats (352 seats in orchestra, 104 in loge, 288 in mezzanine, 286 in tier).

To farthest seat, 121' (36.88m); to break, 48'.

Concessions handled by house, house receives 10% on all vendor sales.

Lobby and Reception Gallery about 2,000 square feet with bathrooms and small kitchen.

All but basement, loge, mezzanine and tier are wheelchair accessible.



Stage

Proscenium: 20' 8" high x 42' 4" wide. Stage is 38' 6" deep.

From last line set to front edge of curved pit cover 37' 3"

From last line set to front of stage 28' 3"

From last line set to plaster line 24' 3"

From last line set to front curtain 23' 11"

Grid height: NO GRID AVAILABLE! High steel drop points available only at 6' and 18' from center on either side. High steel at 56' from stage.

Battens: Twenty-four 52' wide with out-trim of 54' and a capacity of 1,000 lb. per pipe. Repertory hang includes four electrics, three borders, four sets of legs, one main curtain, cyc, and two full-stage blacks, leaving twelve free line sets.

Orchestra pit: Cement floor at 6' (1.83m) below stage floor, normally covered, can hold up to 25 people

Power

Two @ 120/208V, 3-phase 400 amp per leg, in lighting loft 20' (connected to house dimmer racks)

120/208V, 3-phase 100 amp per leg, stage left proscenium wall 7' from stage (cam locks)

Two @ 120/208V, 3-phase 200 amp per leg, stage right behind rail 20' from stage (cam locks)

Lighting

192 2.4k dimmers – 2 ETC SR48 (DMX512).

ETC Insight 108 (Version 3 w/1042 capacity and dual VGA monitors).

- Remote Video Station and Remote Focuses Unit

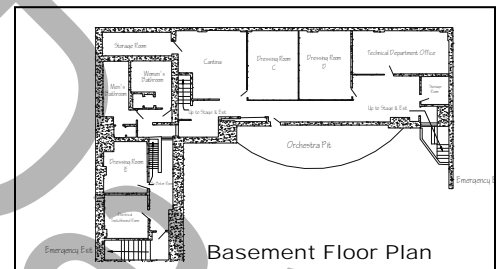
192 2kw circuits, (72 front of house) on stage may be supplemented with extra cable.

- 12 2kw non dims available, not controllable thru light board

Houselights controlled separately.

Two Lycian Super Star 1.2 (1200HB) follow spots available with positions for two more follow spots available.

Rep light plot includes: Three-color par can down wash, four-color high side wash, two-color front wash and over 24 specials mounted at different locations. Four-color strip light to wash backdrops. Over 219 instruments utilized in rep plot. Gel and pattern holders available for all applicable instruments.



Sound

Theater has excellent acoustics.

Small sound system with 4 speakers, CD/tape player, 2 handheld, 1 wireless, and 3 floor microphones available.

Clear Com system available throughout theater.

Monitor/Paging system in all dressing rooms.

Old Steinway upright available.

Dressing Rooms

A & B: Four-person "star" in stage right hallway, stage level with shared bathroom.

C & D: Twelve-person each, under stage.

E: Eight-person, under A & B dressing rooms (under stage).

Cast/crew bathrooms in basement, stage right.

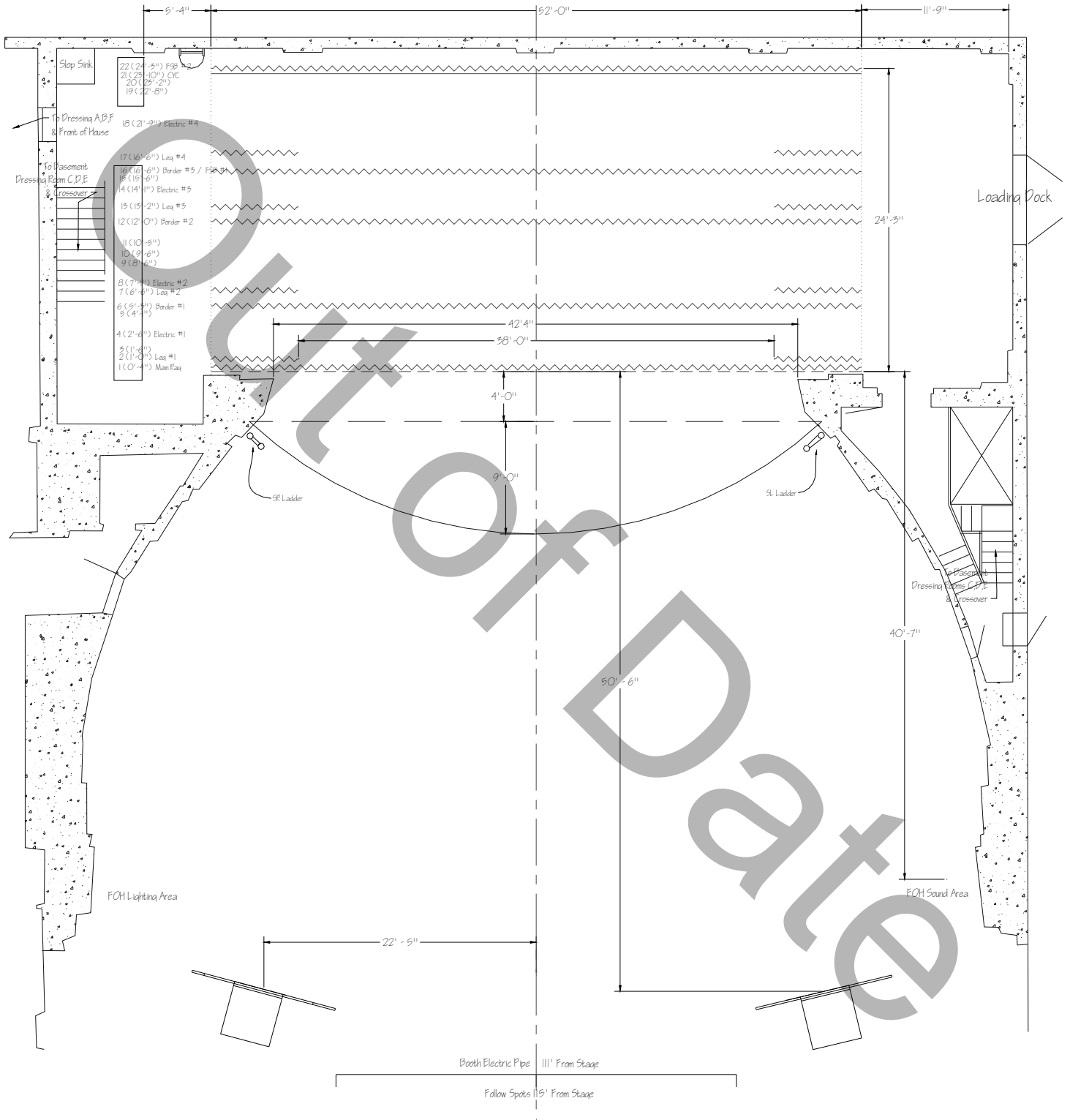
Loading Dock & Parking

Car parking available in lot across from theater. Limited bus and truck parking available with advanced notice.

Loading dock at stage level, 6 inches below normal truck level. No parking at loading dock.

Theater Layout

(with dimensions and line sets)
(Not to Scale)



For more information, to book the theater for rental, for rental rates or a copy of full Technical Packet call the Technical Director at 732-367-7789x206

Special Notes

A full technical packet is available for viewing at rental.strand.org, please contact the technical director for the password. The following is a summary of some important notes to be aware of when bringing a show to the Strand.

Loading Dock: Our loading area is not on our property so we MUST know ahead of time when anything larger than a van or small truck needs to be backed up to the loading dock. It also may be difficult for a large semi truck to be backed up to the dock unless you have a very experienced driver. A fifty-two footer (52') with an extended cab will not fit at all. Saturdays and evenings are usually the easiest time to get the truck to the dock, otherwise parking is on the street and equipment must be hand moved into around the back of the building.

Rigging and Pit: Please take note that the theater DOES NOT have a grid! All above-stage rigging MUST be either on a batten or rigid from a very few steel beams. Currently only a very few of our crew are able to rig off the steel, so we must be made aware of any rigging needs at least two months in advance. Please see Attachment A for available line sets.

The pit normally has a cover on it (and no piano in it). Cover removal is very time-consuming, so again we must ask for a two-month warning. Access from the stage into the audience is normally from offstage only. If you wish to have direct access from the stage to the audience, the first two rows cannot be sold so that removable steps can be set up.

Lighting: Included in this packet is our repertory plot. Please keep it in mind as you are designing your plot. Ours is a very flexible plot and should work well for most shows. Refocusing and rechanneling are not problems; however, rehangng the plot is both time-consuming and expensive, and should be avoided at all cost! Rental groups will be charged for any changes to the plot. We will not relamp instruments, other than those that blow out, and will relamp Par cans on a limited basis only! Included in our full technical packet is a Lightwrite instrument schedule (Attachment I). Please contact the Technical Director for a copy of the Lightwrite 3 file or the AutoCAD drafting. ½" or ¼" plots available upon request.

The front-of-house hanging positions are a left and right perch that are above the break. Also left and right are two lighting ladders at about 2' beyond the front of the stage at the sides of the proscenium. And last but not least, there is a pipe on the front of the booths at the back of the house (more than 100' from stage). **THERE ARE NO OTHER FRONT-OF-HOUSE POSITIONS!**

Sound: Due to fire regulations, front-of-house sound is at the break, house right. All other locations must be discussed before tickets go on sale. Some of the larger (42 channels+) will not fit in this location with room for any outboard gear.

Smoke, Open Flames, and Pyrotechnics: Use of open flames requires two firemen to be on duty within the building. Pyrotechnics must have a New Jersey Licensed pyrotechnician on duty. Aerosols in the dressing rooms are a problem and not allowed.

Backstage: The basement area is not accessible for road boxes except for carrying them down a set of stairs. Backstage capacity is limited to 150 people.

Crew: We are a nonunion facility. The presenter's management, the artists' representative, and the Strand's technical director shall determine call size. Our trained part-time employees, who are familiar with our equipment and facility, staff all events. One staff member must be present whenever a venue is in use regardless of any other personnel required. Minimum staff size is at the discretion of management and is determined on an event-to-event basis. All Strand equipment must be operated by Strand staff.