

Strand Theater Pit Cover Specifications

All work to be warranted for at least 1 year.

All on-site work must be completed during time when the theater is dark. Pit must be able to be recovered for all shows.

Verify layout and dimensions on site with technical director.

Platforms

See drawing (4x8 Typical) for construction guidelines.

(Flame Tempered Duron, 3/4 Ply, Homosote, with aluminum frame)

Build/Sew front edging to match main rag (or some part of the theater). Front edging should go to floor and attach with eater heavy duty Velcro or snaps.

Build 4 – 4' x 8'

- Should be exactly alike and interchangeable..

Build 7 – Custom Sized

- Curve should match front edge of pit wall
- Heavy duty Velcro or snaps on front curved edge
- Center should have false beam to Velcro/or snap to when center platform is removed.
- Center platform will be removed very regularly for access to equipment stored in pit.

Posts

Build 10 as drawn

Build 12 with only half of top and shortened to fit on front ledge.

Replace stage edge posts with 5 steel posts

All posts should be painted black.

Predrill holes so that all posts are interchangeable.

May need to adjust height for differing pit floor (make them all adjustable?).

Supply bolts or Pins for attaching units.

Front Edge of Stage

See drafting for construction guidelines.

Steel Plate to be placed eater side of platform seems.

Steel Pipe to be placed at platform seems.

Paint Black

Repair wall as needed

Smaller and simpler pipe troth

Pit Wall

Repair and Paint as needed.

Line front wall with sound deadening (fire retardant) foam padding.

Stage Decking

Replace Stage Deck – Approximately 85 panels of flame tempered duron

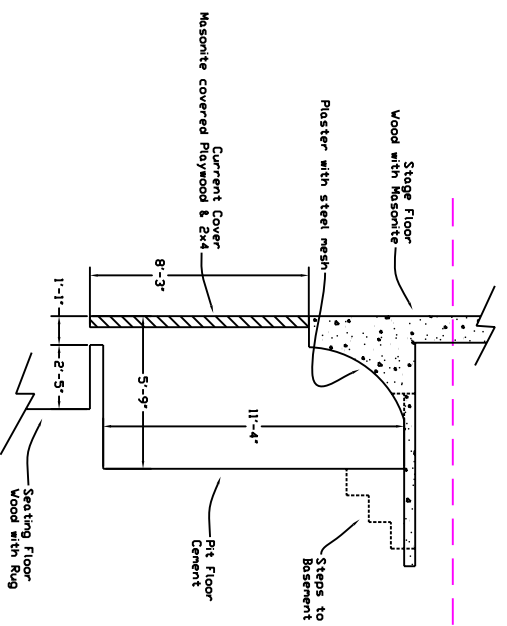
Pre drilled and counter sunk at 1' centers in gemotric pattern using 1 1/2" drywall screws

Spacing of 1/8" between each sheet

Layed out in same patteren that current floor is layed out.

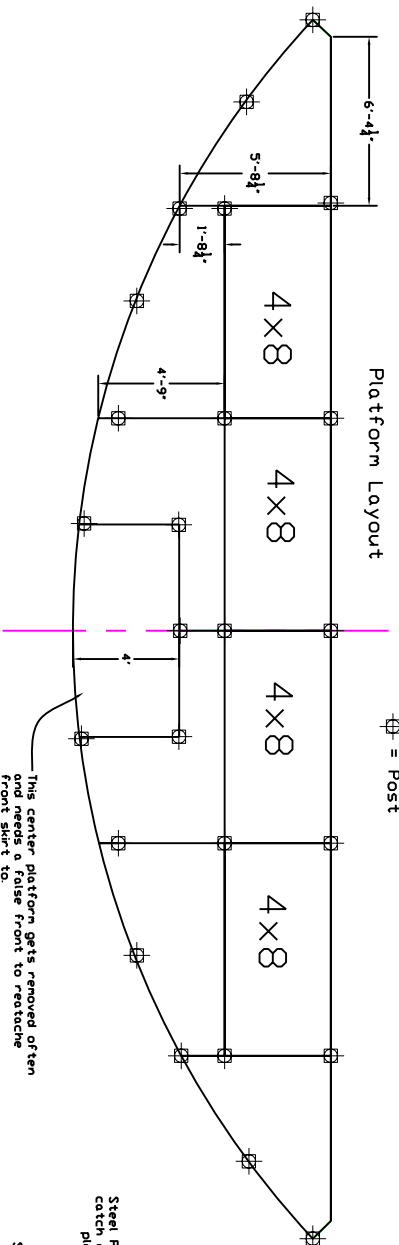
Pre coat both sides with ROSCO black primer

After screwing down paint with Sipersines Black Deck Paint



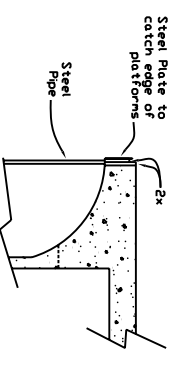
Center Line Section

UP

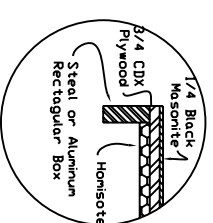
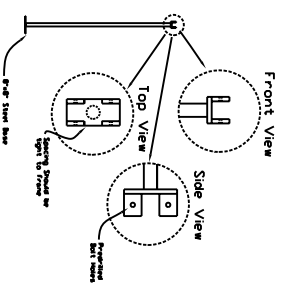


Platform Layout

Ø = Post

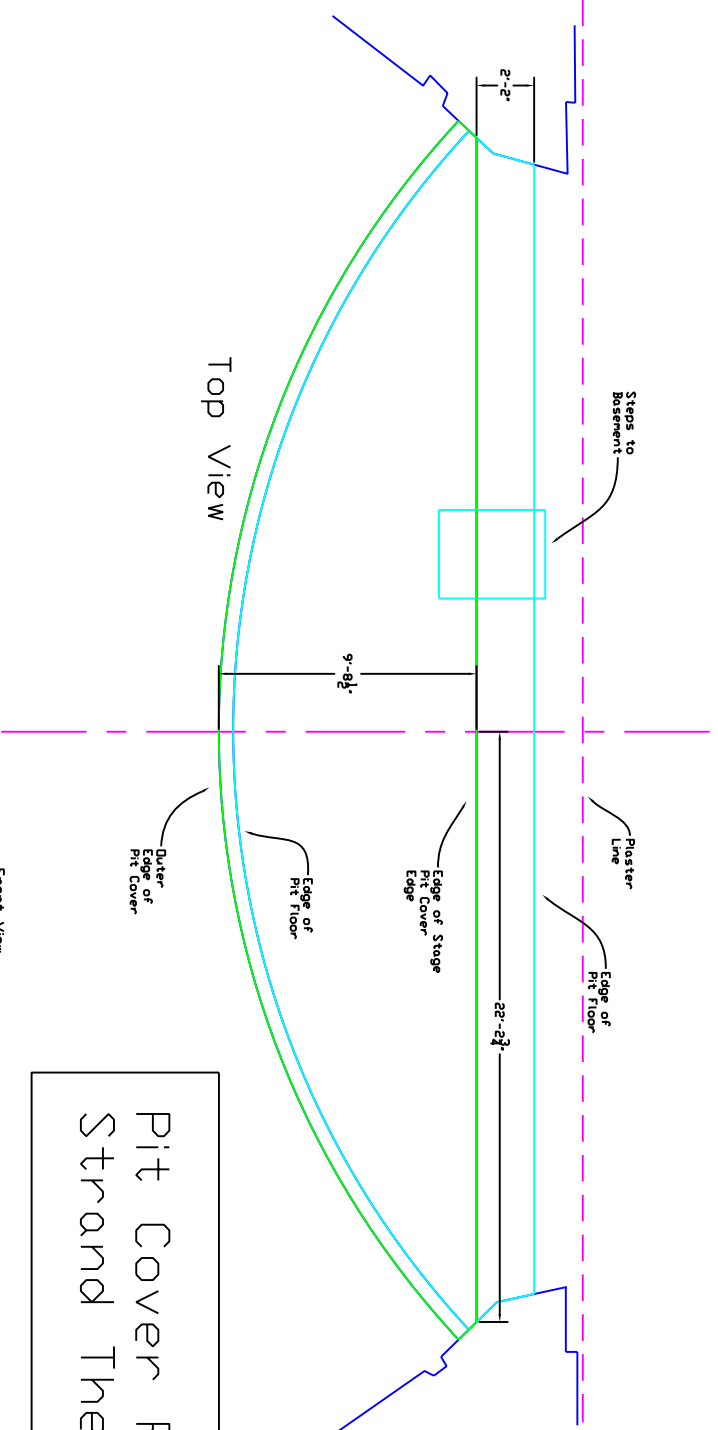


Front of Stage



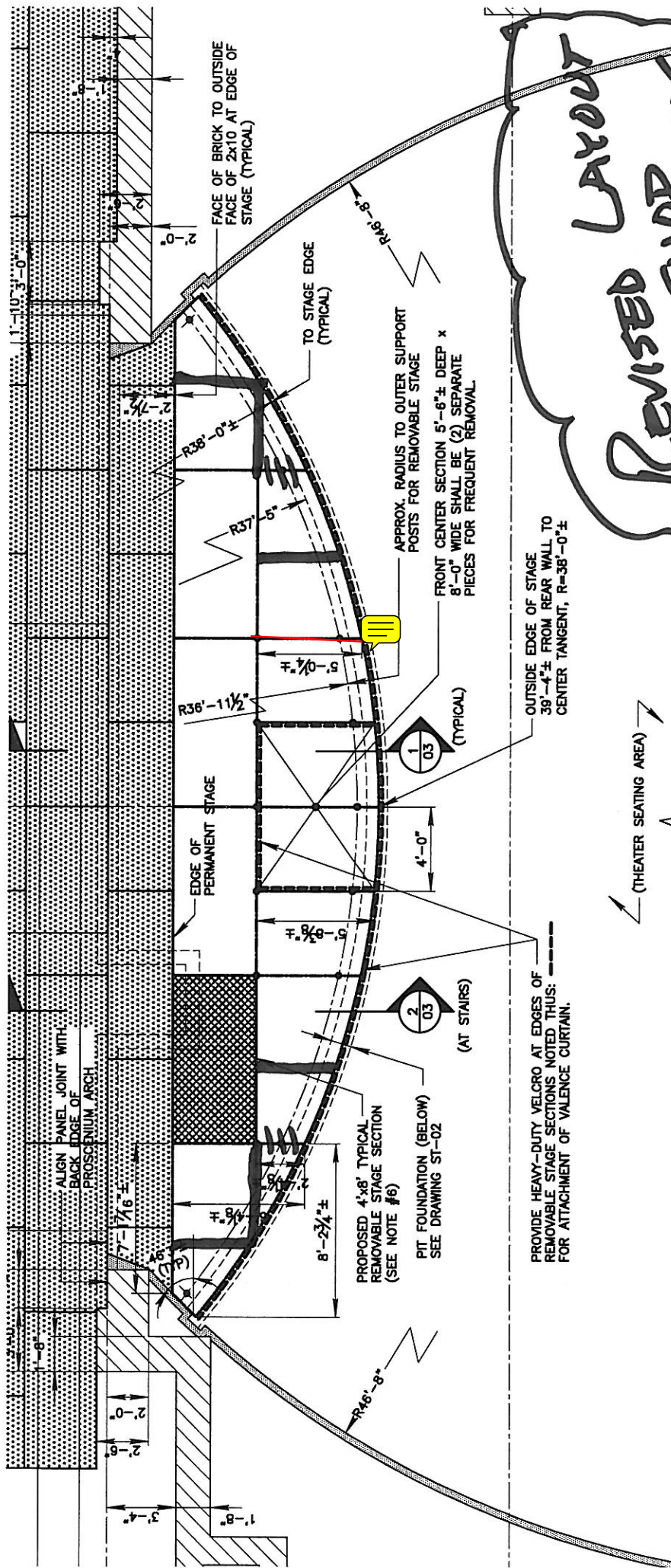
4x8 Typical Platform Construction

Top View



Pit Cover Rebuild
Strand Theater

Designed by Christopher Staton
May 31, 2007 - Not to Scale
Verify Layout & Dimensions in Field



REVISED LAYOUT PER SHOP DRAWINGS

PARTIAL PLAN AT STAGE & PIT COVER
 REFERENCE ORIGINAL DRAWINGS E-3 & E-4 & SECTION A-A/E-1 (SEE NOTE #4)
 TOP OF STAGE = REFERENCE ELEVATION 0'-0"
 (SCALE: 1/4" = 1'-0")

T.M.C.
 I.T.E.
 21
 I.S.
 ALL
 R TO
 I, OR
 INGS.